

Important Information

960 Series Camber Kit

This kit has been loosely **assembled**. All fasteners must be checked and tightened correctly. It is the customer's responsibility to check that all fasteners are properly tightened before use.

Please observe the following notes:

- Left-hand and Right-hand Threads are used on Spindles
- Spindle Nuts must be tightened with a Torque Wrench to **160 ft/lb** using the special tool provided.

O-Rings must be fitted between:

1. Spindle and Housing end
 2. Drive Flange and Hub
 3. End Cap and Drive Flange
- Do Not over tighten Allen Bolts in Spindle Lock Ring (Nip Only)
 - Do Not over tighten Countersunk Allen Bolts in drive flange (Nip Only)
 - 4mm Axle Float Buttons (Thin black plastic plug) are to be fitted to outer end of axles before fitting end caps.
 - After fitting outer end cap buttons, the supplied M10 bolts and washers should be used to allow 2mm of end-float per side. This is done by adding or subtracting washers until the 2mm end-float is achieved. In some rare cases, the bolt head may need to be ground shorter if after removing all the washers there is still less than 2mm of end-float.
 - Depending on Diff Center Detail axles may need to be slightly trimmed to fit.
 - Oil level must be filled as per attached drawing. Fill to Ford OEM level and add 0.5 qt.

Please see the exploded diagram for a visual reference of kit assembly, or for replacement part information.

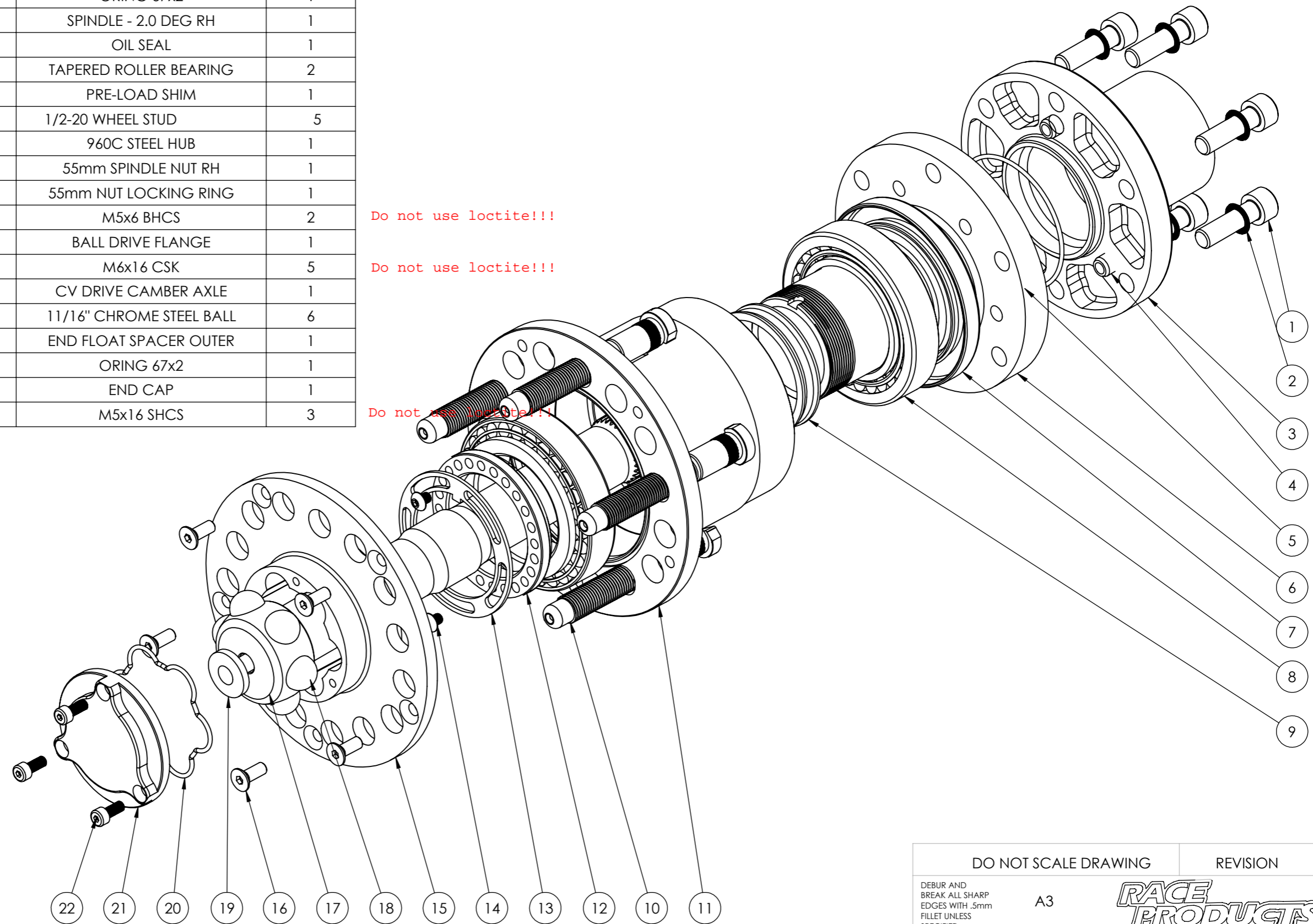
ITEM NO.	Part Number	DESCRIPTION	QTY.
1	M10x30SHCSZ	M10x30 SHCS ZINC	6
2	VSWM10	M10 VIBRATION SAFETY WASHER	6
3	RPC9591	HOUSING END 3" TUBE	1
4	548361	M10x20 EXTRACTABLE DOWEL	3
5	OR67x2	ORING 67x2	1
6	RPC95720	SPINDLE - 2.0 DEG RH	1
7	CR26660	OIL SEAL	1
8	32011X	TAPERED ROLLER BEARING	2
9	RPC949	PRE-LOAD SHIM	1
10	RPWS016	1/2-20 WHEEL STUD	5
11	RPC9630	960C STEEL HUB	1
12	RPC945-R	55mm SPINDLE NUT RH	1
13	RPC947	55mm NUT LOCKING RING	1
14	M5x6BH	M5x6 BHCS	2
15	RPC9620	BALL DRIVE FLANGE	1
16	RP757	M6x16 CSK	5
17	RPA**C-**	CV DRIVE CAMBER AXLE	1
18	RP1116CSB	11/16" CHROME STEEL BALL	6
19	RP9263	END FLOAT SPACER OUTER	1
20	OR67x2	ORING 67x2	1
21	RPC9651	END CAP	1
22	M5x16SHCS	M5x16 SHCS	3


Torque
54 ft-lb

Do not use loctite!!!

Do not use loctite!!!

Do not use loctite!!!



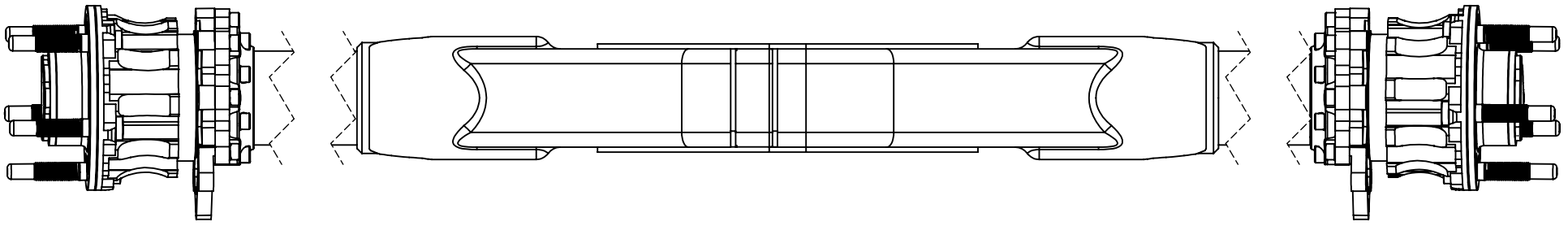
DO NOT SCALE DRAWING		REVISION	
DEBUR AND BREAK ALL SHARP EDGES WITH .5mm FILLET UNLESS SPECIFIED	A3		
DWG NO.			
PART NO.		DESCRIPTION.	
SCALE:1:2 SHEET 1 OF 2		960 SERIES CAMBER KIT EXPLODED	

UNLESS OTHERWISE SPECIFIED DIMENSIONS ARE IN MILLIMETERS	GENERAL TOLERANCES	NAME	SIGNATURE	DATE	MATERIAL:
	NO PLACES DEC. +/- 0.25	DRAWN	DC	14/04/15	
	1 PLACES DEC. +/- 0.10	APPV'D			
	2 PLACES DEC. +/- 0.05	QA			WEIGHT:
	ANGULAR +/- 0.50				
	ANGULAR +/- 0.25				

1 2 3 4 5 6

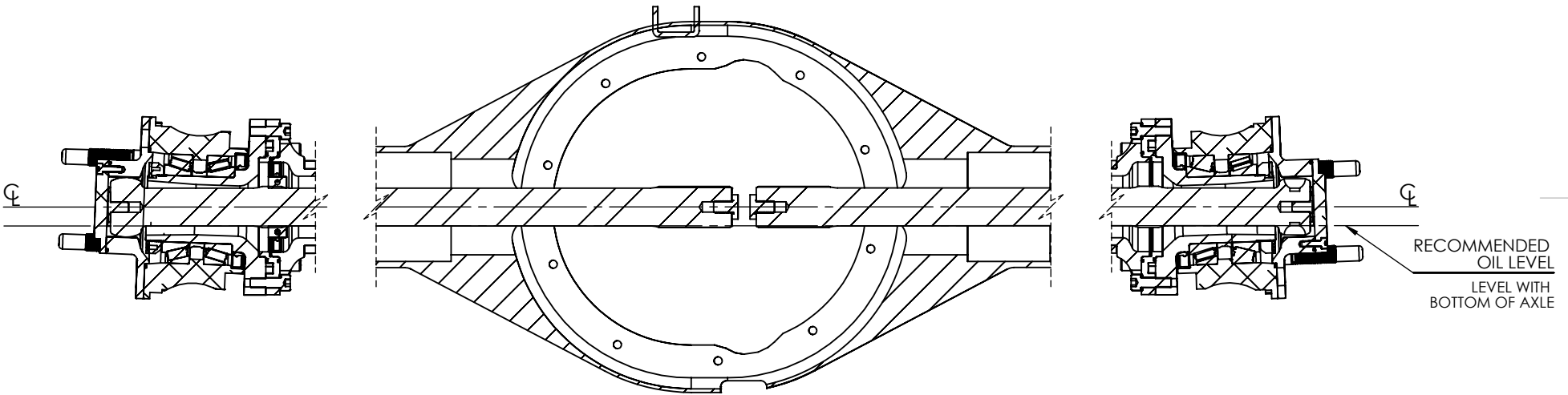
A

A



B

B



C

C

SECTION A-A

D

FINISH: DEBUR AND BREAK ALL SHARP EDGES WITH .5mm FILLET UNLESS SPECIFIED	DO NOT SCALE DRAWING	REVISION
	RACE PRODUCTS	
DESCRIPTION: RECOMMENDED OIL LEVEL		A4
PART NO.	DWG NO.	
SCALE:1:5	SHEET 1 OF 1	

ISSUE	REVISION	NAME	DATE	ALL DIMENSIONS ARE IN MILLIMETERS UNLESS SPECIFIED. THIS DRAWING OR DESIGN IS STRICTLY CONFIDENTIAL AND REMAINS THE EXCLUSIVE PROPERTY OF BONNERGROVE PTY LTD AND MAY NOT BE USED OR COPIED WITHOUT THEIR WRITTEN CONSENT	GENERAL TOLERANCES NO PLACES DEC. +/- 0.25 1 PLACES DEC. +/- 0.10 2 PLACES DEC. +/- 0.05 ANGULAR +/- 0.50 ANGULAR +/- 0.25	DRAWN DC	NAME	SIGNATURE	DATE	MATERIAL:
A	INITIAL RELEASE	DC	15/02/12							
						APPV'D				
						QA				WEIGHT: